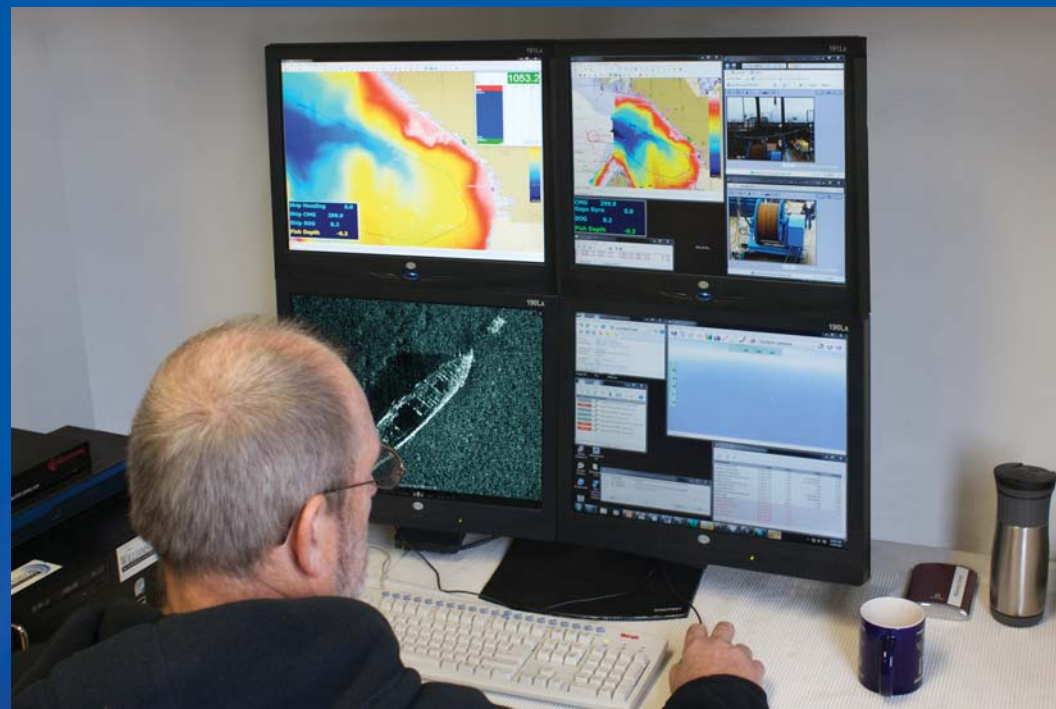
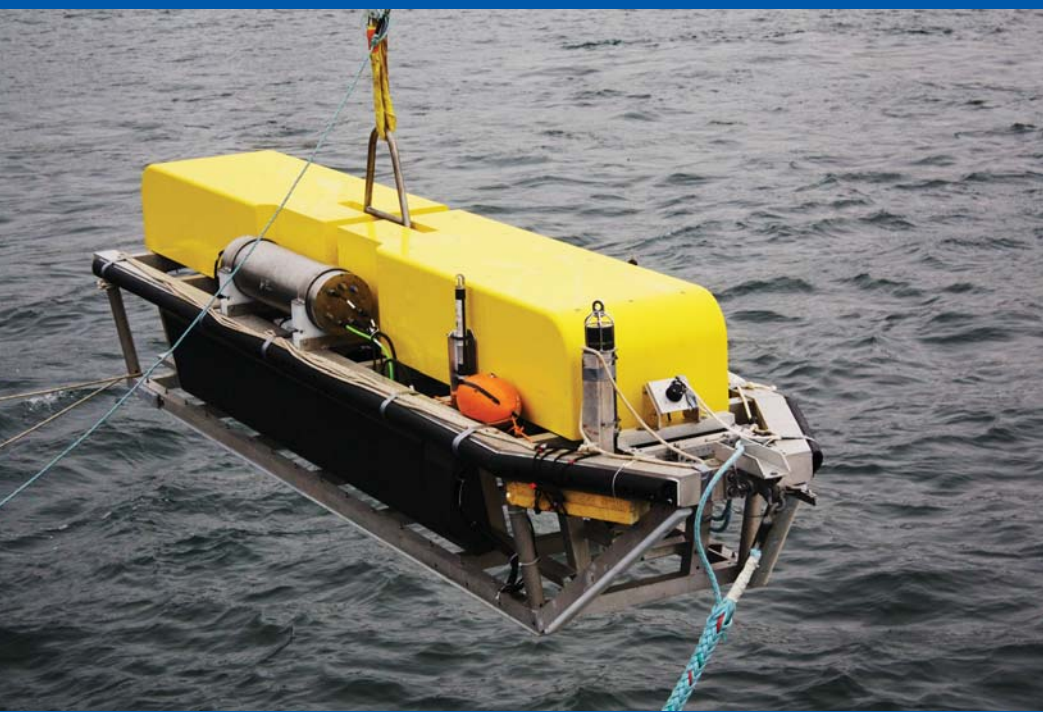


PROSAS SURVEYOR

PS60



Alba Ultrasound has completed development of a range of transducer arrays for Raytheon Applied Signal Technology's high-definition synthetic aperture sonar products (PROSAS™ Surveyor). The most recent product is a 60-kHz system with a 6,000-meter depth rating. The system consists of two three-meter-long arrays. During the development phase, Alba Ultrasound demonstrated the stability of the array technology when operating at pressures exceeding the full 6,000-meter depth rating.

— Andy Wilby, Chief Engineer,
Raytheon Applied Signal Technology, Inc.